



ZIPTRAK BLINDS

/ PRODUCT CARE AND USE

Please follow these product care instructions. Our aim is to provide you with years of hassle-free weather protection with very little maintenance. Failure to follow these will void your warranty.



**MAKING
SHADE**

AFTER INSTALLATION

PVC and Sunscreen Mesh Blinds have been rolled up for transportation. You may need to leave the blinds down for several days to allow the material to settle.

OPERATION GUIDELINES

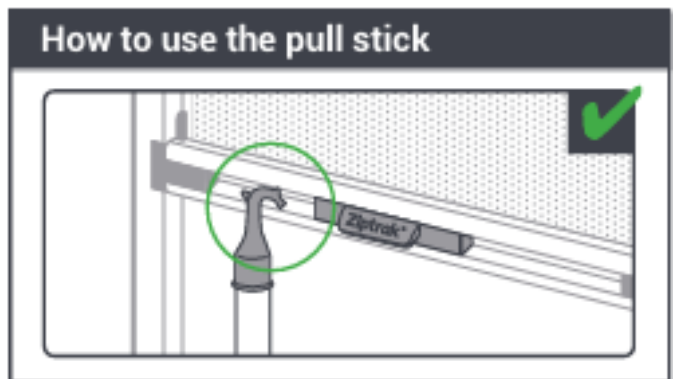
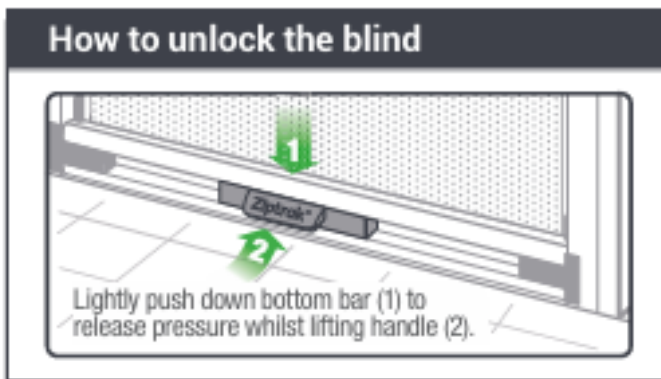
Ziptrak blinds are easy and simple to use, providing a smooth glide for years of care-free operation. If it is difficult to raise or lower your blind for no obvious reason, please get in touch with us.

SPRING BALANCED

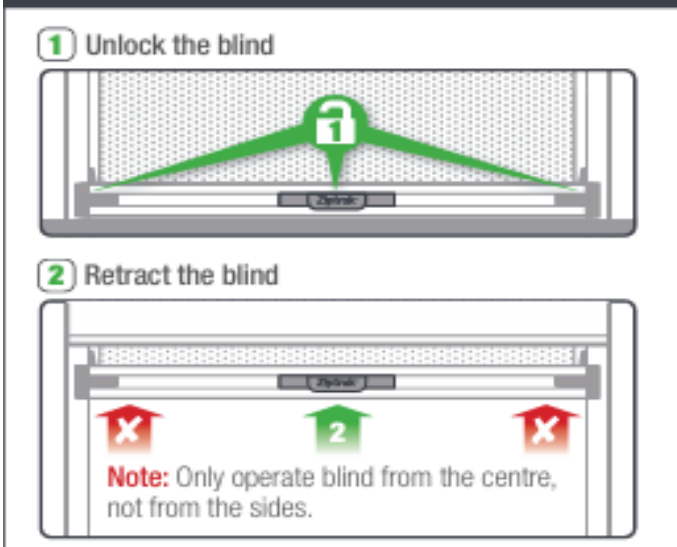
Spring-balanced blinds allow you to easily lower or raise the blind, with a sophisticated spring that supports the weight of the blind. The blind should be hand-operated from the centre of the bottom bar. This ensures the material rolls evenly onto the top tube. The blind should always glide smoothly and easily along the track.

MOTORISED

Motorised blinds are operated by utilising the remote control provided and must be supervised while moving. Motorised blinds cannot be hand-operated and doing so may damage the blind. The blinds will not operate during a power outage.

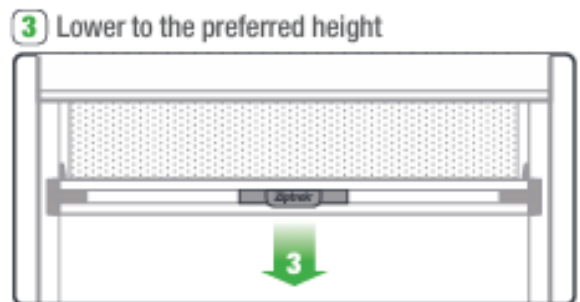


Ziptrak® blinds can be left at any height



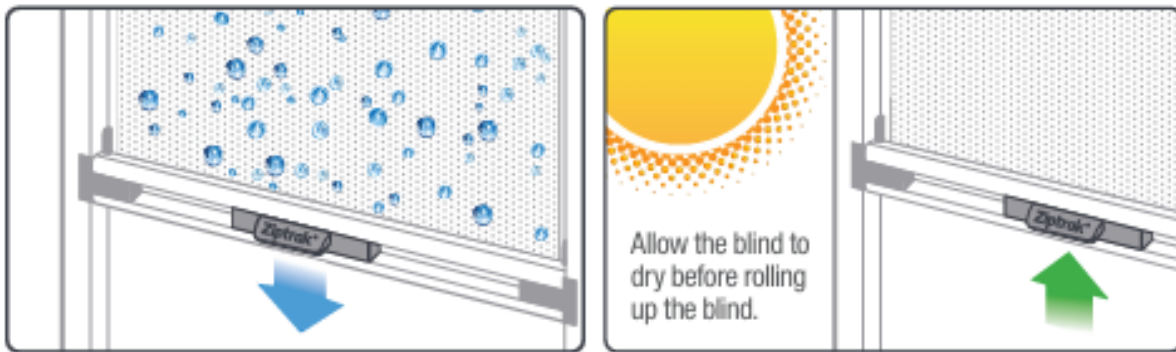
We recommend retracting the blind, then lowering.

To achieve the best appearance of your sunscreen Mesh or Clear PVC blinds, it is important that the blind is partially retracted and then lowered to your final desired height.



Avoid rolling up the blind when it is wet

Moisture within the rolled-up blind material may cause mould to form.



WINDY CONDITIONS

Ziptrak blinds are a strong and robust system and are commonly installed in coastal regions and locations prone to high winds. You may find your spring-balanced blind tricky to operate in windy conditions due to the pressure of the wind on the blind material. Use your hand to push against the material to reduce this pressure and then operate the blind. If motorised, supervised raising and lowering of the blind must occur.

In windy conditions, blinds should be left down and locked or fully retracted. Halfway is the most vulnerable position. During severe weather, your blinds should be fully retracted.

CLEANING

Ziptrak Blinds should be cleaned regularly to remove the build-up of environmental residues. It is recommended that blinds are washed down every 3 months. If you live in a coastal area, your blinds should be washed more often to thoroughly remove sand, salt, dirt and moisture deposits from all areas of the blind.

Sunscreen Mesh Blinds

- Clean the blind with a soft cloth and soapy cold water (such as heavily diluted household detergent).
- Never apply full strength detergents, cleaning fluids, soaps, insecticides, or garden sprays. Do not use bore water or allow bore water sprinkler systems to wet the blind. Never allow petrochemicals or solvents to touch the blind.
- **Do not** use a high-pressure hose to clean the blind.

PVC Blinds

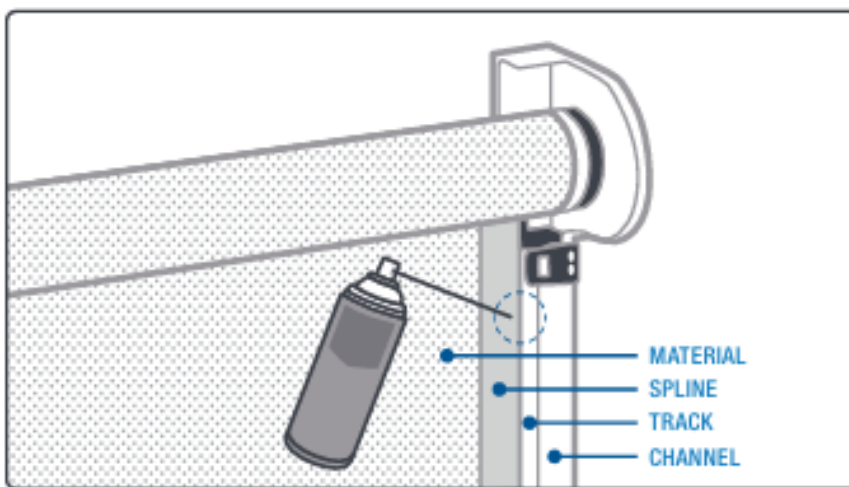
- **Do not** use window cleaning detergents to clean the PVC.
- Clean the blind with a soft cloth and soapy water (we recommend Swiftee).
- Never let bird droppings, dirt, or stains to remain on the PVC for long periods of time.
- PVC is highly sensitive to scratching and marks.
- Use a soft, clean cloth to polish and dry the PVC after cleaning.
- Do not use a high-pressure hose to clean the blind.

MAINTENANCE

Ziptrak blinds should not require additional lubrication by the owner. However, in dusty and seafront locations, approximately once a year you may wish to add lubricant to assist in the continued smooth operation of the blind. **You must use silicone spray, such as food grade CRC 808.**

To apply, lower the blind all the way; evenly apply the spray in the groove between the spline and the track. Do this for the front of the blind only, on both left and right sides. After lubrication, open and close the blind several times to evenly distribute the silicone spray within the track.

To preserve the appearance of your Ziptrak blinds, regular cleaning is advised. Especially in coastal areas, frequent washing is suggested to remove the environmental build-up of chlorides and sulphur compounds.



It is very important that you do not use any oil based lubricants such as WD40, as they will damage the spline tape and clog the dust that may be within the track.

WARRANTY

Ziptrak Blinds have a 24-month warranty on all the components on the Ziptrak outdoor system.

SERVICE

Don't forget we offer a Product Service. This service checks the operation of your product, checks the condition of the fabric and stitching and changes remote control batteries if necessary. If you feel your Making Shade product could benefit from a health check please get in touch with the Making Shade Team.